

Tenda



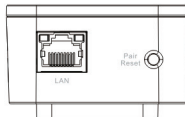
P1000

Install Guide

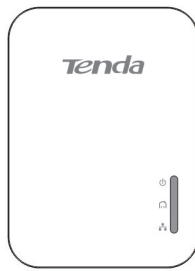
Package Contents

- AV1000 Gigabit Powerline Adapter
- Ethernet Cable
- Install Guide

1 Button and LED Indicators

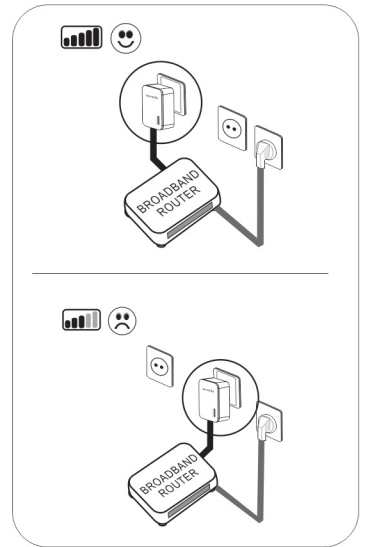
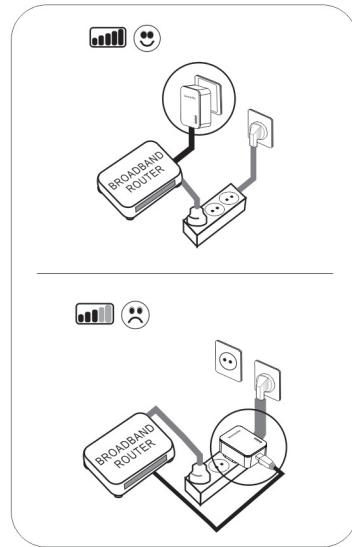
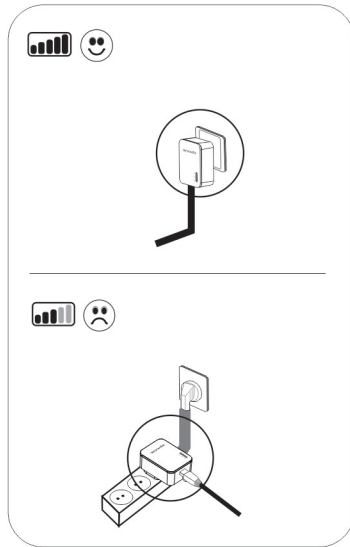


Button	Description
Pair Reset	Press it for 1~3 seconds to pair with other adapters
	Press it for over 6 seconds, system will be restored to factory default settings



LED	Status	Description
Power	Off	The device is NOT receiving electrical power.
	Solid	The device is receiving electrical power.
	Blinking	The device is under power saving mode.
Pairing	Off	The device does not pair with other powerline adapters.
	Solid	The device has paired with other powerline adapters.
	Blinking	The device is trying pairing with other adapters.
Ethernet	Off	Cable is connected improperly or not connected.
	Solid	Cable is connected correctly but no data is transferred.
	Blinking	Cable is connected correctly and data is being transferred.

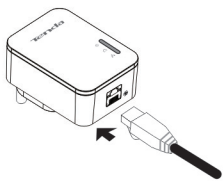
2



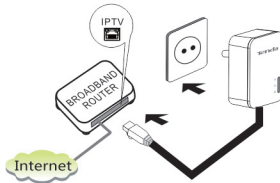
3 IPTV Application

Adapter-A

Step 1 Plug one end of an Ethernet cable into a LAN port of Adapter-A

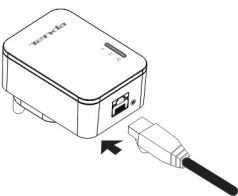


Step 2 Plug the other end of the Ethernet cable into an IPTV (or a LAN) port of a router, and then plug Adapter-A into a socket.

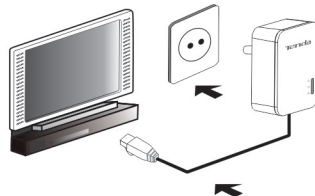


Adapter-B

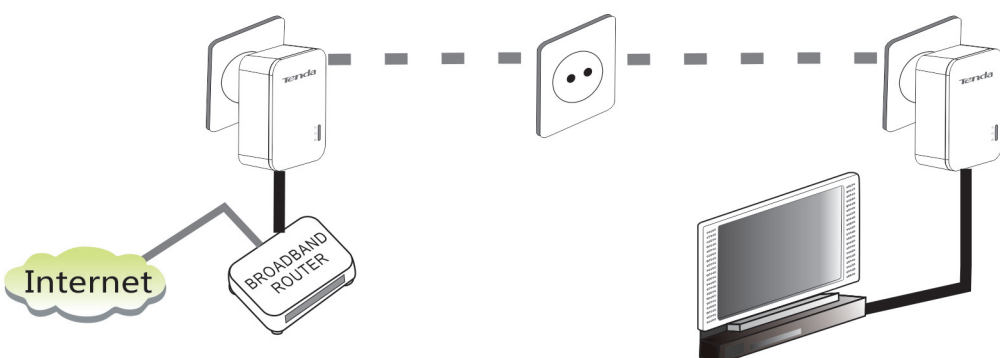
Step 1 Plug one end of an Ethernet cable into a LAN port of Adapter-B



Step 2 Plug the other end of the Ethernet cable into a network port of IPTV Set Top Box, and then plug Adapter-B into a socket.

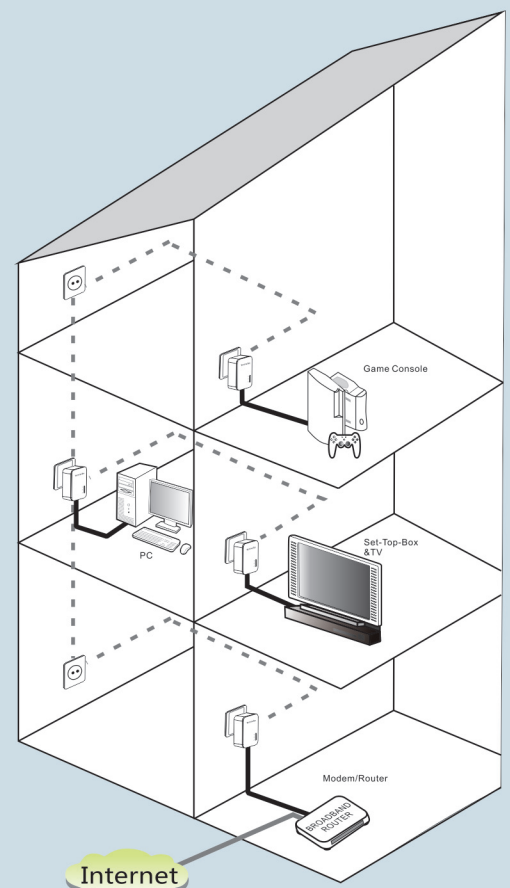


The overall diagram is shown below:



Tenda

Application



Manufacturer: Shenzhen Tenda Technology Co., Ltd
Address: 6-8 Floor, Tower E3, No. 1001, Zhongshanyuan Road, Nanshan District, Shenzhen, China. 518052
Website: <http://www.tenda.cn>

Email: support02@tenda.com.cn
Skype: tendasz
YouTube: Tendasz1999

Hotline: 1-800-570-5892 (USA) (061) 1300787922 (Australia)
 (0852)36120883 (HongKong) (064) 800787922 (New Zealand)